



LEAK REPAIR - LEVEL 2 (PRESSURIZED)

Wrap Steel Ultra - Quick Repair Kit For Active Pipe Leaks



- “
- No shutdown required
 - Repairs leak in 15 minutes
 - Applicable to pipes up to 18" (457 mm) diameter
 - Repairs under active leak up to 150 psi (11kg/cm²) pressure
 - Withstand pressure up to 500 psi (35 kg/cm²)
 - Withstand temperature up to 392°F (200°C)

- KIT**
- 1 roll of Fiberglass Tape
 - 1 roll of Self Fusing Tape
 - 1 unit of Epoxy Stick Quick Cure
 - 1 pair of latex gloves
 - Operating Instructions

PRODUCT SELECTION GUIDE

THE COLOR INDICATES THE SIZE OF THE TAPE ROLL

Fiberglass Tape

2" x 12'
(50mm x 3.6m)
4" x 12'
100mm x 3.6m)
5" x 20'
(125mm x 6m)

Epoxy Stick

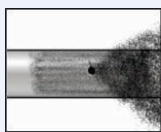
1" x 16'
(25mm x 5m)
2" x 16'
50mm x 5m)
4" x 16'
(100mm x 5m)

Pipe Diameter	Number of Rolls Required		
	50 psi 4 Kg/cm ² 10 layers	150 psi 11 Kg/cm ² 15 layers	400 psi 28 Kg/cm ² 20 layers
1/2"	1	1	1
3/4"	1	1	1
1"	1	1	1
1.1/4"	1	1	1
1.1/2"	1	1	1
2"	1	1	1
2.1/2"	1	1	1
3"	1	1	1
4"	1	1	1

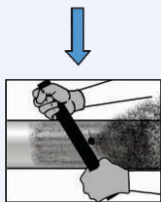
Pipe Diameter	Number of Rolls Required		
	50 psi 4 Kg/cm ² 10 layers	150 psi 11 Kg/cm ² 15 layers	400 psi 28 Kg/cm ² 20 layers
5"	1	1	2
6"	1	2	3
8"	2	3	4
10"	3	4	6
12"	4	5	8
14"	2	3	4
16"	3	4	5
18"	3	4	5
>18"	Consult		

APPLICATION PROCEDURE

1 Surface Preparation



Minimize the flow rate and reduce system pressure

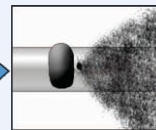


Roughen the area to be repaired

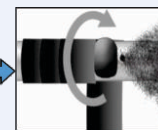
2 Stop the Leak



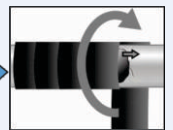
Knead the Epoxy Stick



Place the Epoxy Stick away from the leak location

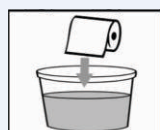


Start wrapping the Self Fusing Tape a few distance away from the leak location

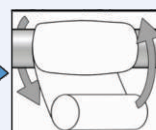


Continue to wrap the Self Fusing Tape onto pipe while pushing the Epoxy Stick onto leak location

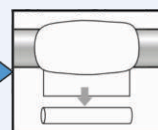
3 Reinforce Leak Area



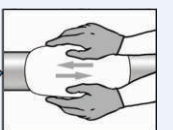
Immerse the Fiberglass Tape into water



Wrap the Fiberglass Tape around the repair area as tightly and evenly as possible, using the entire roll



Discard the plastic tube at the end of the roll



Wet gloves in water and quickly compress the bubbling resins back into the Fiberglass Wrap